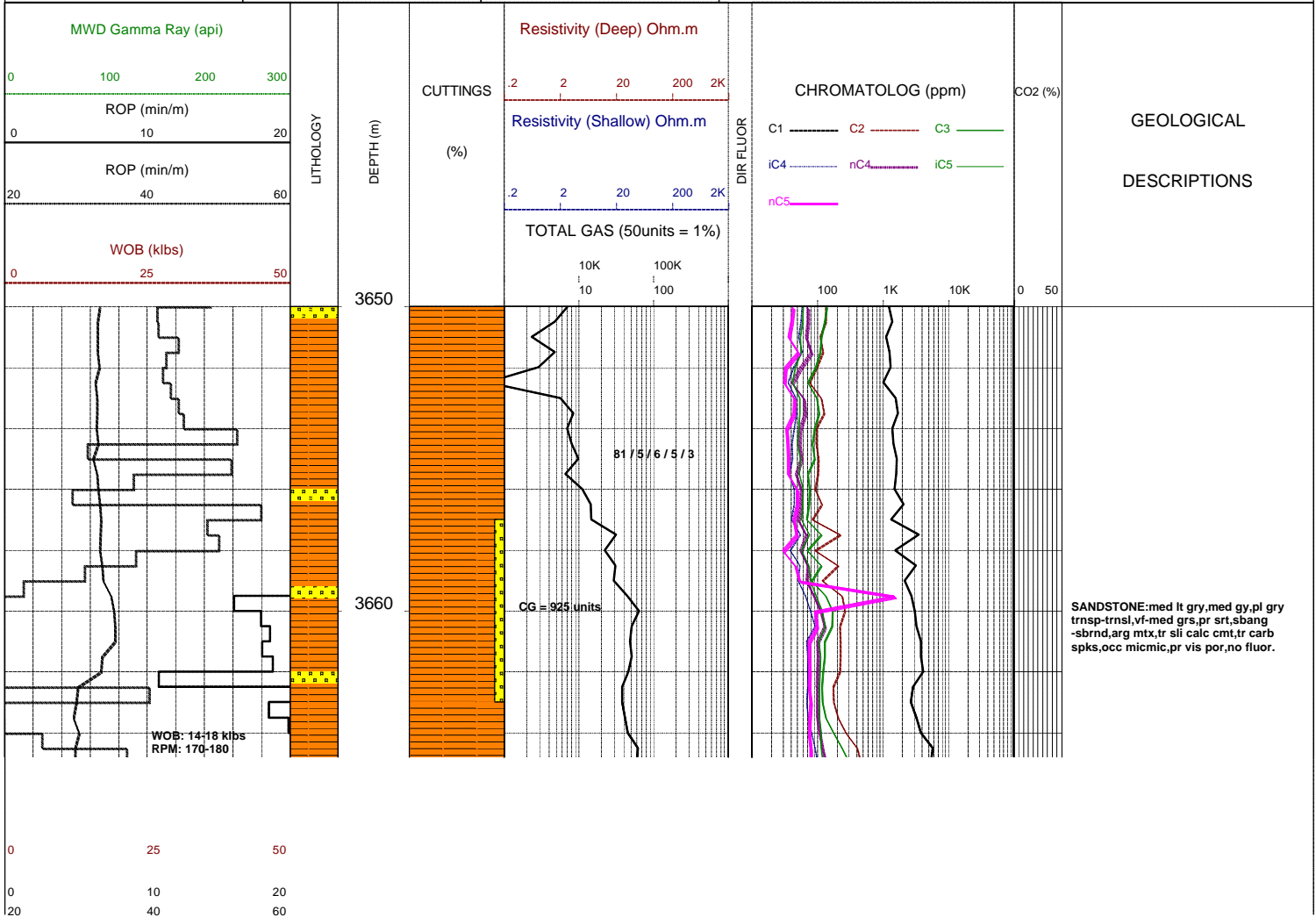


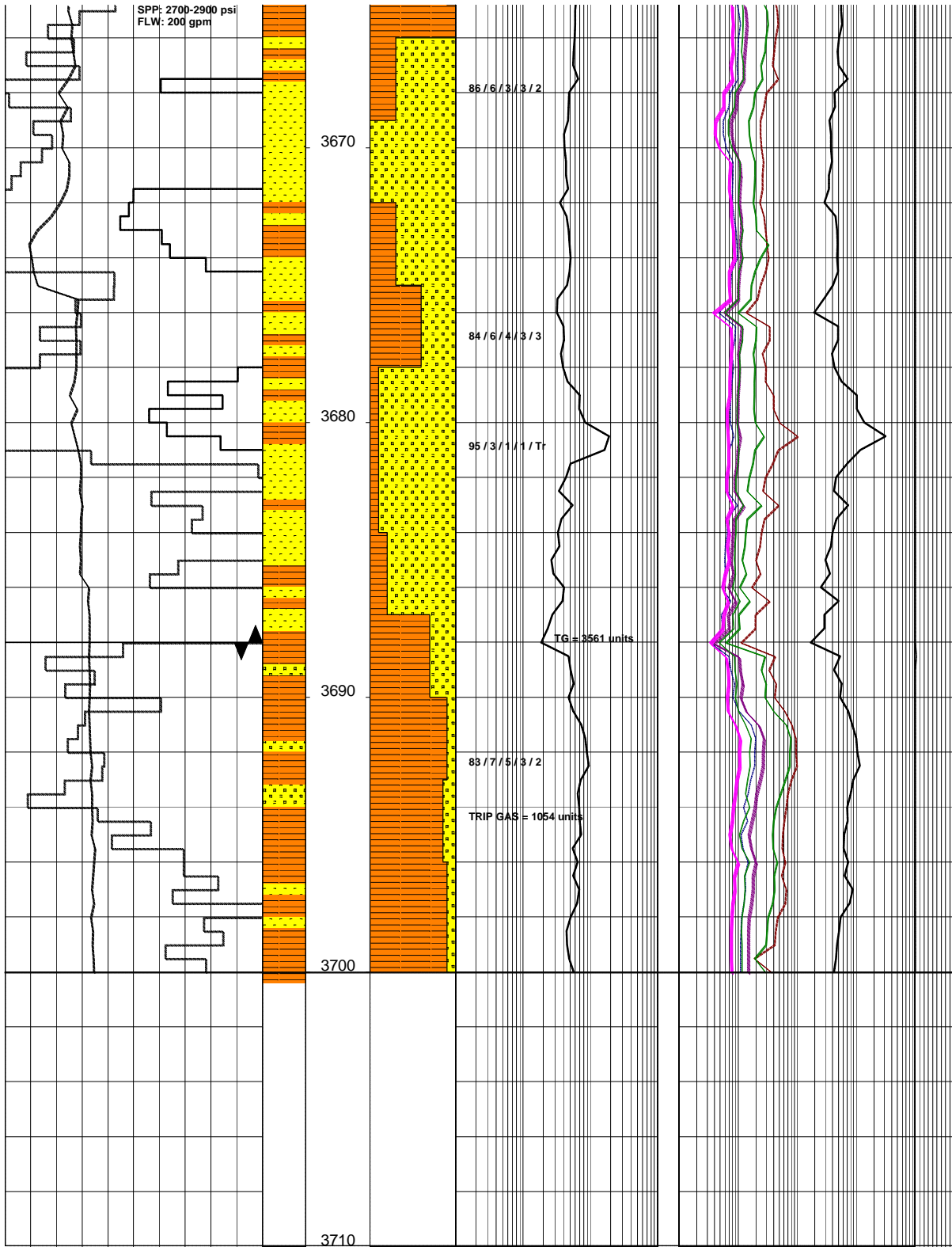
GLENAIRE 1 ST1

Field : GLENAIRE	Kelly Bushing : PEP 160	Rig : ENSIGN 32	Open Hole:	Cased Hole:	Loggers : J.SUTTON
Block: OTWAY BASIN	Ground Level : STATUS	Spud Date : 08/09/2006	17.5" (12.25") 307m	13.375" (9.625") 303.5m	N.LUIS
State : VICTORIA	GRS80 Ellipsoid MGA94 Zone54 :	TD Date : 25/10/2006	12.25" (8.5") 1255m	9.625" (7.0") 1252m	J.TRETHEWEY
Country : AUSTRALIA	Lat. : 37°34'47.03S	Total Depth : 3700	8.5" 3006m	7.0" 2999m	HO MINH HAU
Scale : 1/ 200	Long. : 140°59'52.25E	Final Status : C & S	6.0" 3700	5.0" III	

LITHOLOGY	ACCESSORIES	DRILLING DATA	ABBREVIATIONS																																				
<ul style="list-style-type: none"> Conglomerate Coarse Sandstone Med Sandstone Calcareous Sst Silty Sandstone Siltstone Carb. Siltstone Calc. Siltstone Clay Limestone Dolomite Coal Anhydrite Gypsum Igneous Volcanic Metamorphic Cement 	<ul style="list-style-type: none"> Pyrite Siderite Glauconite Feldspar Mica Ferrous Chert Calcareous Dolomitic Carbonaceous Lithoclast Breccia Foraminifera Corals Inoceramus Bryozoa Plant remains Fossils 	<ul style="list-style-type: none"> Casing Shoe Bit Trip Wiper Trip Core DST Deviation Survey <div style="border: 1px solid black; padding: 5px; margin-top: 10px;"> <p style="text-align: center; margin: 0;">MUD DATA</p> <p>MW - Mud Weight (lb/gal)</p> <p>FV - Funnel Viscosity (s/qt)</p> <p>PV - Plastic Viscosity (cps)</p> <p>YP - Yield Point (lb/100ftsq)</p> <p>Gel - Gel Strength (10sec)</p> <p>WL - Water Loss (cc/30min)</p> <p>pH - Acidity / Alkalinity</p> <p>Ck - Cake (32nd/inch)</p> <p>O/W/S - Oil / Water / Solids</p> <p>Cl - Chlorides (mg/L)</p> <p>K+ - Potassium (mg/L)</p> <p>Rmf - Res. Mud Filtrate (ohmm)</p> </div>	<table border="0" style="width: 100%;"> <tr> <td style="width: 50%;">BOPD - Barrels of Oil Per Day</td> <td style="width: 50%;">OG - Over Gauge</td> </tr> <tr> <td>BWPD - Barrels of Water Per Day</td> <td>OH - Open Hole</td> </tr> <tr> <td>CG - Connection Gas</td> <td>OTS - Oil To Surface</td> </tr> <tr> <td>CO - Circulate Out</td> <td>Q - Flow Rate</td> </tr> <tr> <td>COND - Condensate</td> <td>REC - Recovery</td> </tr> <tr> <td>c/c - Crush Cut</td> <td>FLUOR - Fluorescence</td> </tr> <tr> <td>DST - Drill Stem Test</td> <td>ROP - Rate Of Penetration</td> </tr> <tr> <td>FLOW - Flow Rate (gal/min)</td> <td>RPM - Revolutions Per Minute</td> </tr> <tr> <td>GCM - Gas Cut Mud</td> <td>RTSTM - Rate Too Small To Measure</td> </tr> <tr> <td>GCW - Gas Cut Water</td> <td>Rw - Resistivity water</td> </tr> <tr> <td>GTS - Gas To Surface</td> <td>r/r - Ring Residue</td> </tr> <tr> <td>INJ - Injection of Mist (bbls/hr)</td> <td>SCFM - Standard Cubic Ft/Min (air)</td> </tr> <tr> <td>LCM - Lost Circulation Material</td> <td>SGCM - Slightly Gas Cut Mud</td> </tr> <tr> <td>MMCFD - Million Cubic Feet / Day</td> <td>SPM - Strokes Per Minute</td> </tr> <tr> <td>NGTS - No Gas To Surface</td> <td>SPP - Stand Pipe Pressure</td> </tr> <tr> <td>NOTS - No Oil To Surface</td> <td>SWC - Side-Wall Core</td> </tr> <tr> <td>NFTS - No Flow To Surface</td> <td>TG - Trip Gas</td> </tr> <tr> <td>OCM - Oil Cut Mud</td> <td>WOB - Weight On Bit</td> </tr> </table>	BOPD - Barrels of Oil Per Day	OG - Over Gauge	BWPD - Barrels of Water Per Day	OH - Open Hole	CG - Connection Gas	OTS - Oil To Surface	CO - Circulate Out	Q - Flow Rate	COND - Condensate	REC - Recovery	c/c - Crush Cut	FLUOR - Fluorescence	DST - Drill Stem Test	ROP - Rate Of Penetration	FLOW - Flow Rate (gal/min)	RPM - Revolutions Per Minute	GCM - Gas Cut Mud	RTSTM - Rate Too Small To Measure	GCW - Gas Cut Water	Rw - Resistivity water	GTS - Gas To Surface	r/r - Ring Residue	INJ - Injection of Mist (bbls/hr)	SCFM - Standard Cubic Ft/Min (air)	LCM - Lost Circulation Material	SGCM - Slightly Gas Cut Mud	MMCFD - Million Cubic Feet / Day	SPM - Strokes Per Minute	NGTS - No Gas To Surface	SPP - Stand Pipe Pressure	NOTS - No Oil To Surface	SWC - Side-Wall Core	NFTS - No Flow To Surface	TG - Trip Gas	OCM - Oil Cut Mud	WOB - Weight On Bit
BOPD - Barrels of Oil Per Day	OG - Over Gauge																																						
BWPD - Barrels of Water Per Day	OH - Open Hole																																						
CG - Connection Gas	OTS - Oil To Surface																																						
CO - Circulate Out	Q - Flow Rate																																						
COND - Condensate	REC - Recovery																																						
c/c - Crush Cut	FLUOR - Fluorescence																																						
DST - Drill Stem Test	ROP - Rate Of Penetration																																						
FLOW - Flow Rate (gal/min)	RPM - Revolutions Per Minute																																						
GCM - Gas Cut Mud	RTSTM - Rate Too Small To Measure																																						
GCW - Gas Cut Water	Rw - Resistivity water																																						
GTS - Gas To Surface	r/r - Ring Residue																																						
INJ - Injection of Mist (bbls/hr)	SCFM - Standard Cubic Ft/Min (air)																																						
LCM - Lost Circulation Material	SGCM - Slightly Gas Cut Mud																																						
MMCFD - Million Cubic Feet / Day	SPM - Strokes Per Minute																																						
NGTS - No Gas To Surface	SPP - Stand Pipe Pressure																																						
NOTS - No Oil To Surface	SWC - Side-Wall Core																																						
NFTS - No Flow To Surface	TG - Trip Gas																																						
OCM - Oil Cut Mud	WOB - Weight On Bit																																						



SPP: 2700-2900 psi
FLW: 200 gpm



KAOLANITIC SANDSTONE: off wh, pl gry, vf-f, occ med-crs lse grs, sbang, mnr mod wk sil cmt, abdt off wh kaol mtx, tr brn liths & carb spks, fri-lse, v pr vis & pr inf por, no fluor.

24 STD WIPER TRIP @ 3688m
TO SHOE @ 2999m

SILTY CLAYSTONE: dk gry, blk, dk brn, occ med brn, lt gry, aren i/p, com carb mat, mnr micmic, calc i/p, mod hd, occ hd-v hd, tr frm, sbblky-blky, occ sbfiss.

TG = 3561 units

83/7/5/3/2

TRIP GAS = 1054 units

5" TUBING SHOE
SET @ xxxm

GLENAIRE 1 REACHED TD
@ 1430 HRS ON 25-10-2006

DRILLER'S DEPTH: 3700m
LOGGER'S DEPTH: xxxm

LOGGING RUNS: